

ODE: AN INTRODUCTION

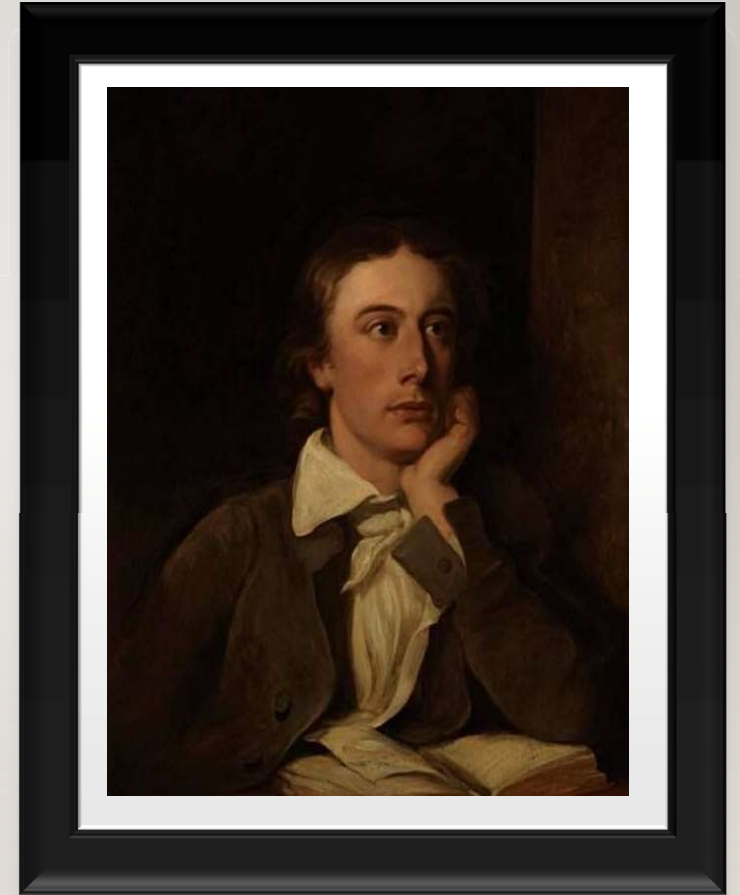
PURBASHA MONDAL

ASSISTANT PROFESSOR OF ENGLISH

SALTORA NETAJI CENTENARY COLLEGE

JOHN KEATS

(1795-1821)



ENGLISH POET



ROMANTIC POET

SECOND GENERATION

- **SECOND GENERATION**

**JOHN KEATS
LORD BYRON
PERCY BYSSHE SHELLEY**

WHAT IS AN ODE?

- A KIND OF POETRY

- A CLASSIC ODE IS OF THREE TYPES
-

STROPHE
ANTISTROPHE
EPODE

ODE- GREEK WORD



- ODE

A POEM EXPRESSING THE POET'S
THOUGHTS AND FEELINGS ABOUT
A PARTICULAR PERSON OR
SUBJECT

EXAMPLE:

**“ODE TO A
NIGHTINGALE”**

THANK YOU

