

# ***Skeletal System***



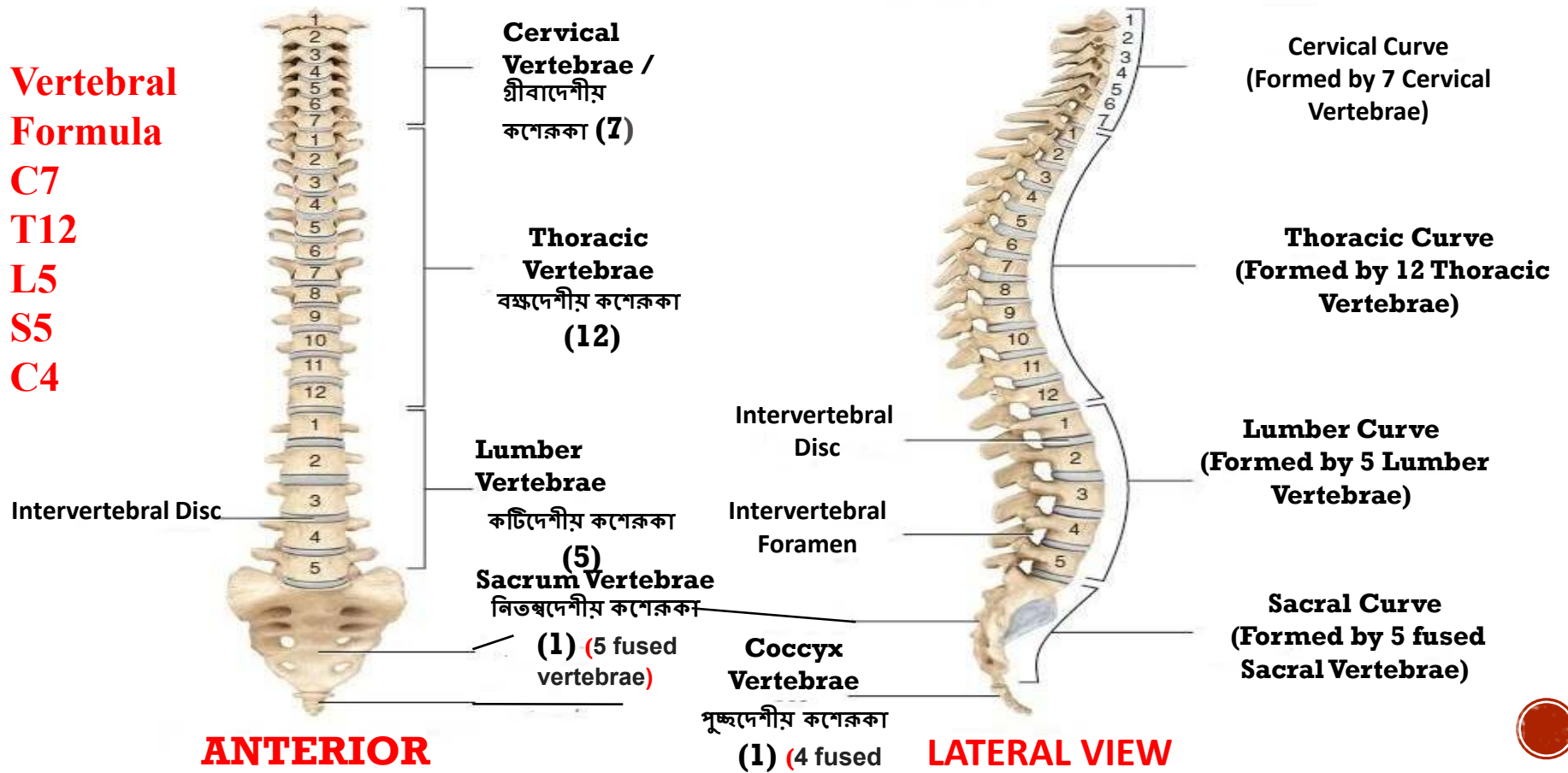
**BY**  
**DR. AVIJEET MONDAL**



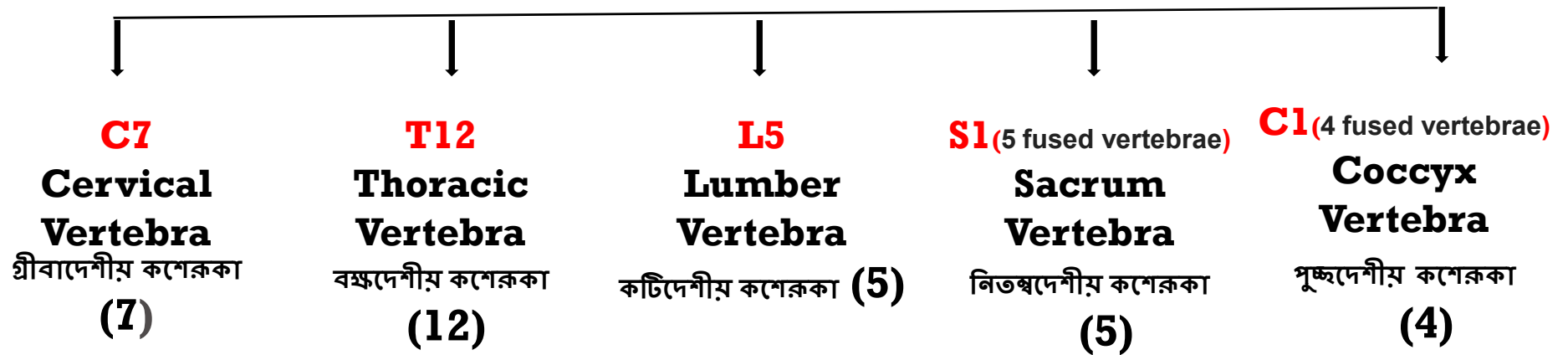
# VERTEBRAL COLUMN / BACK BONE (মেরুদণ্ড)

## Vertebral Formula

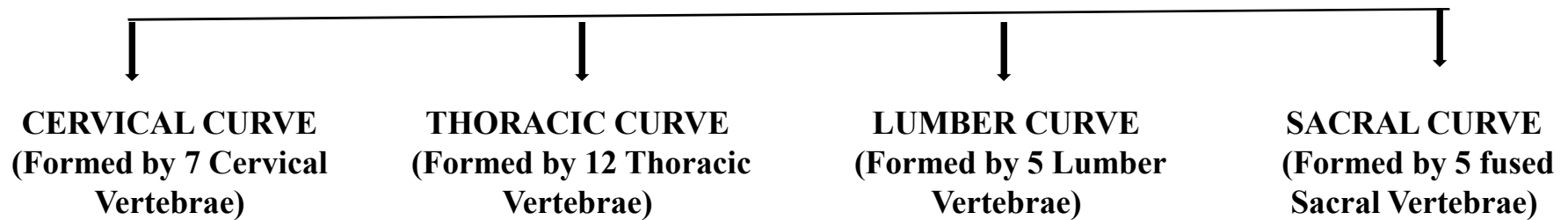
C7  
T12  
L5  
S5  
C4



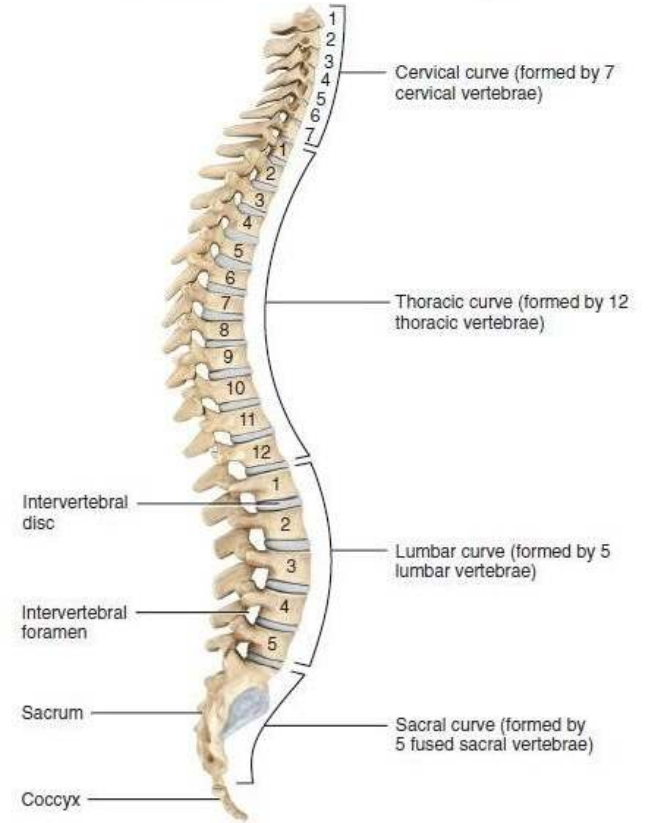
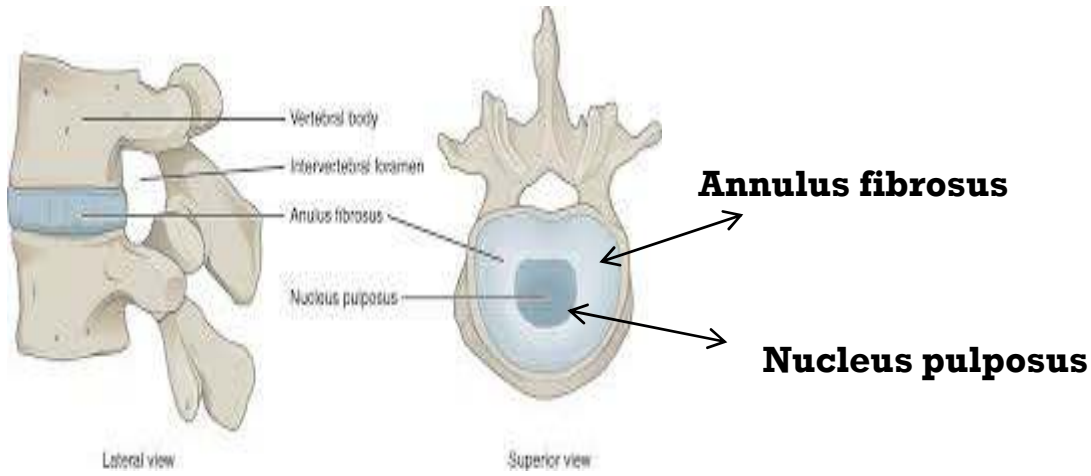
## VERTEBRAL COLUMN / BACK BONE (মেরুদণ্ড) 33/26



## VERTEBRAL CURVE



# INTERVERTEBRAL DISC

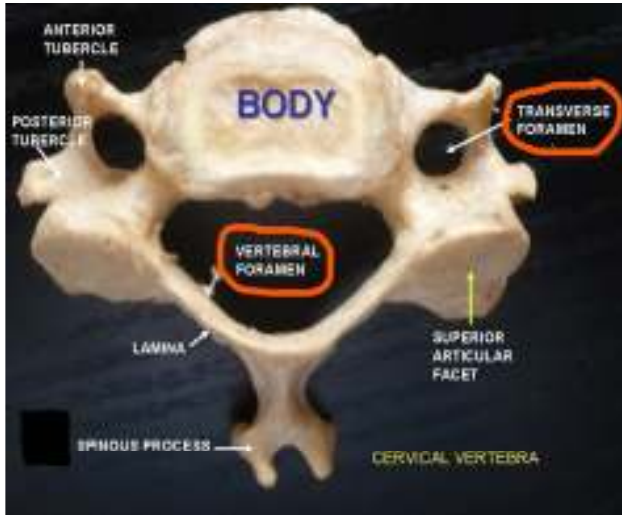


দ্বিতীয় কসেরুকার পর থেকে শুরু করে Sacrum পর্যন্ত যে তরুণাস্থিময় প্যাড ।

মানব মেরুদণ্ডে 23 টি ডিস্ক রয়েছে - গ্রীবদেশীয় অঞ্চলে 6, বক্ষদেশীয় অঞ্চলে 12 টি এবং কটদেশীয় অঞ্চলে 5 টি



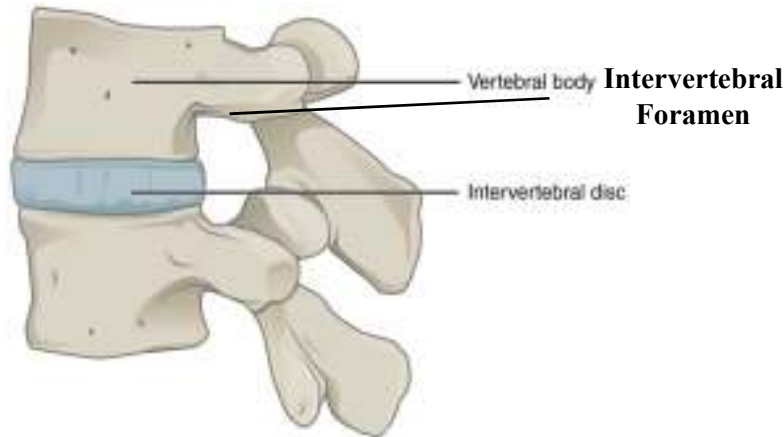
# VERTEBRAL, INTERVERTEBRAL & TRANSVERSE FORAMEN



**Vertebral Foramen:** মেরুদণ্ডের প্রতিটি কশেরুকার মধ্যবর্তী গর্ত বা ছিদ্রকে বলা হয় Vertebral Foramen। **(SPINAL CORD)**

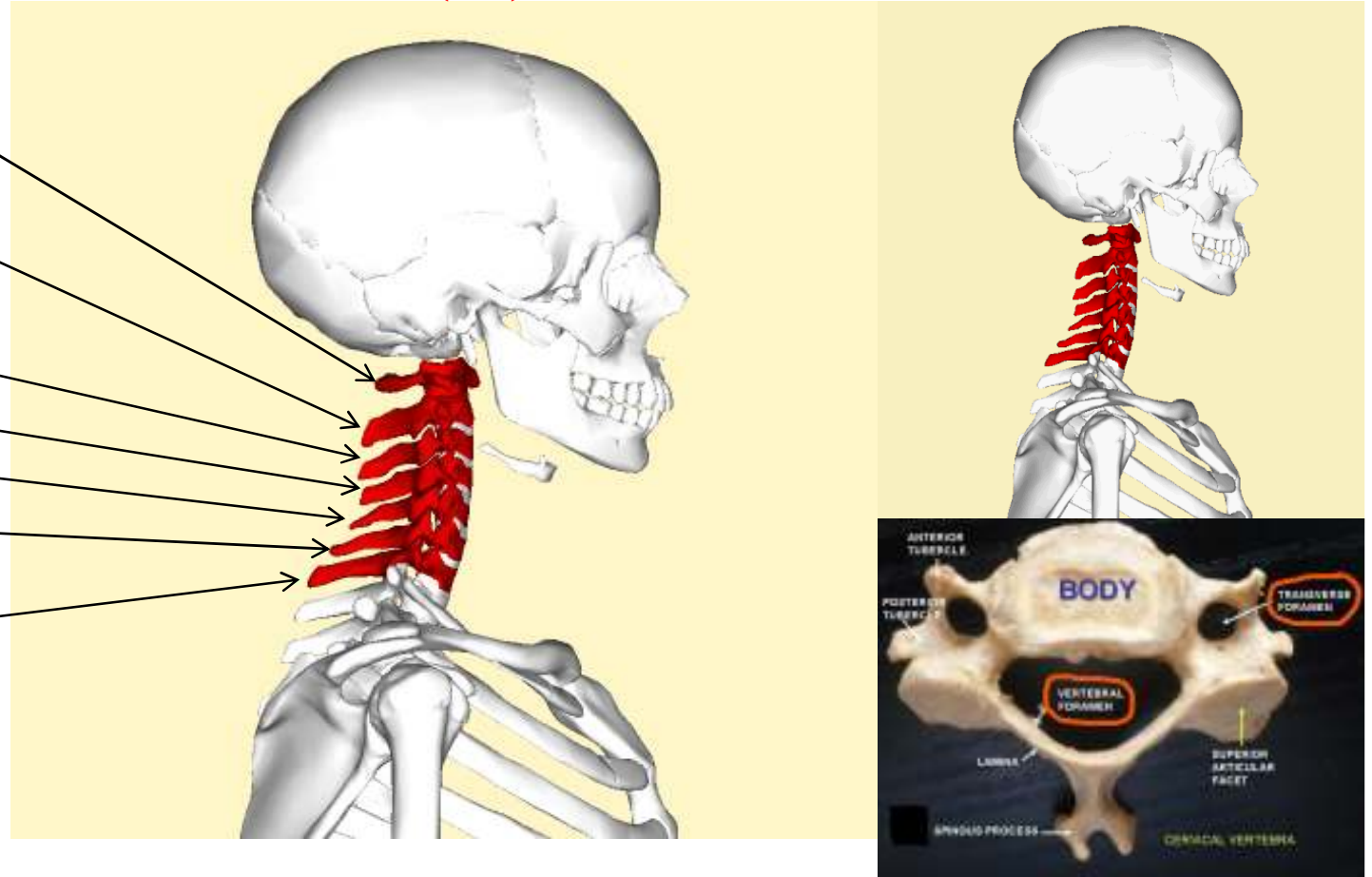
**Intervertebral Foramen :** পরস্পর অবস্থিত দুটি মেরুদণ্ডের কশেরুকা একত্রিত হয়ে দুই পাশে দুটি ছিদ্রের মত অংশ গঠন করে ,সেই ছিদ্রগুলিকে বলা হয় **Intervertebral Foramen**। **(SPINAL NERVES)**

**Transverse Foramen :** এটি হল একটি ছোট ছিদ্র যা গ্রীবদেশীয় কশেরুকা দেখা যায়। **(Vertebral Artery & Vein)**



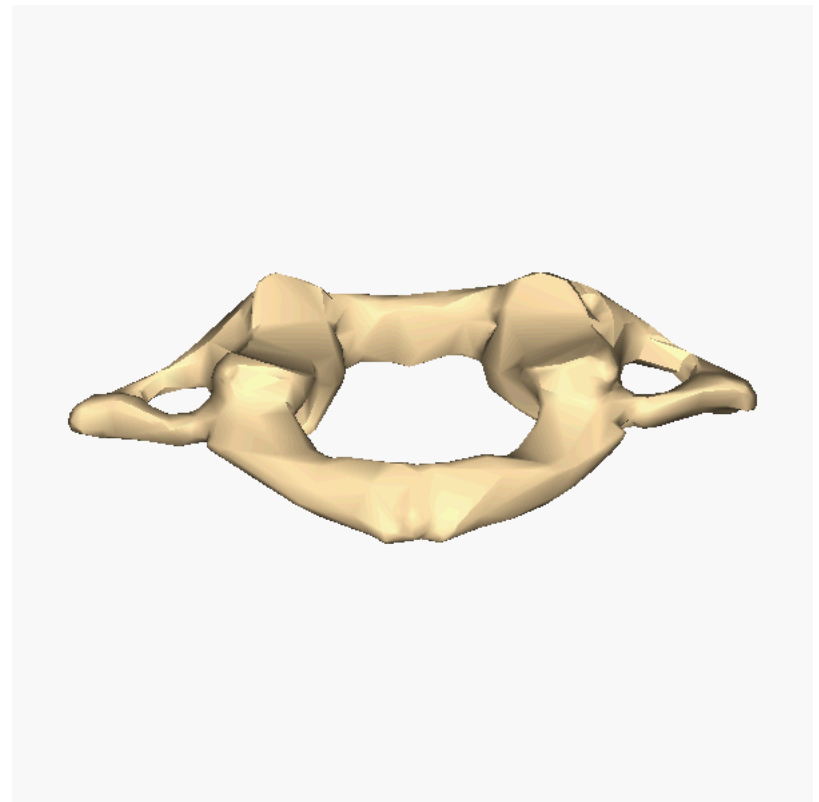
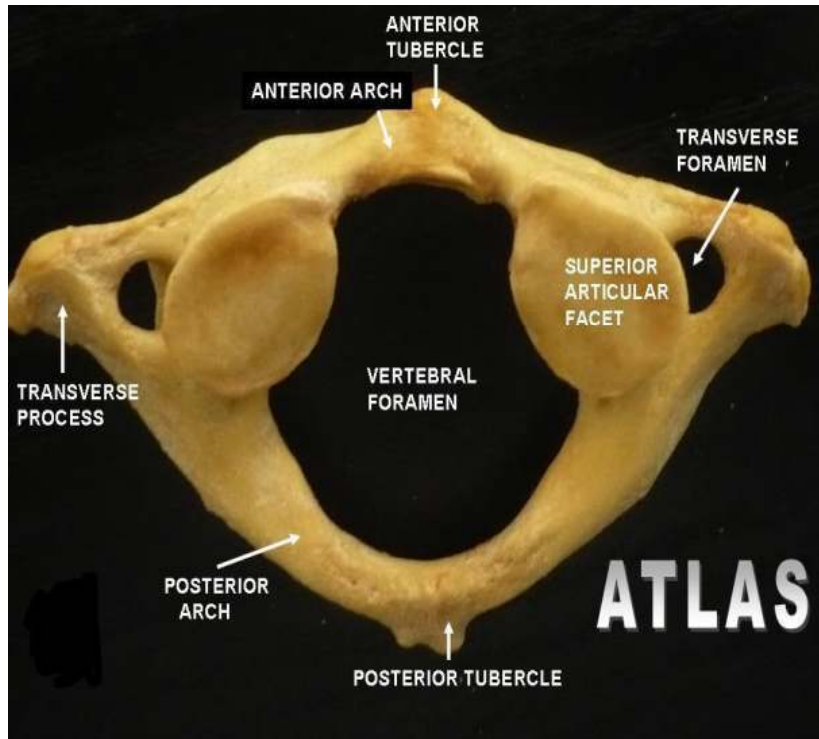
# Cervical Vertebra / গ্রীবদেশীয় কশেরুকা (C7)

- C 1 - Atlas
- C 2 - Axis
- C 3
- C 4
- C 5
- C 6
- C7 Prominences

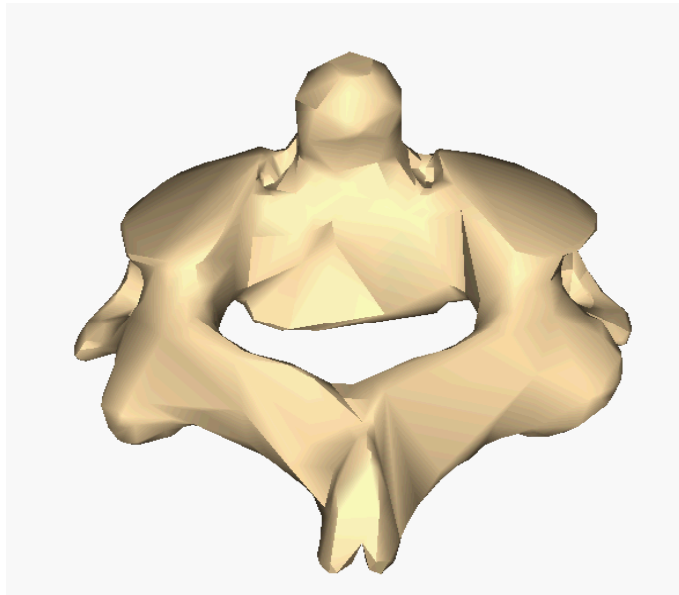
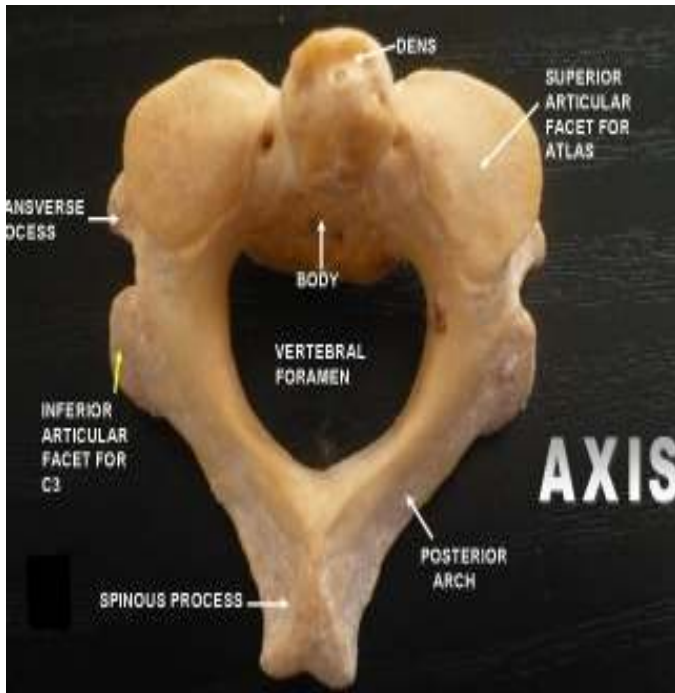


## STRUCTURE OF (ATLAS (C1) VERTRBA

### ATLAS (C1)

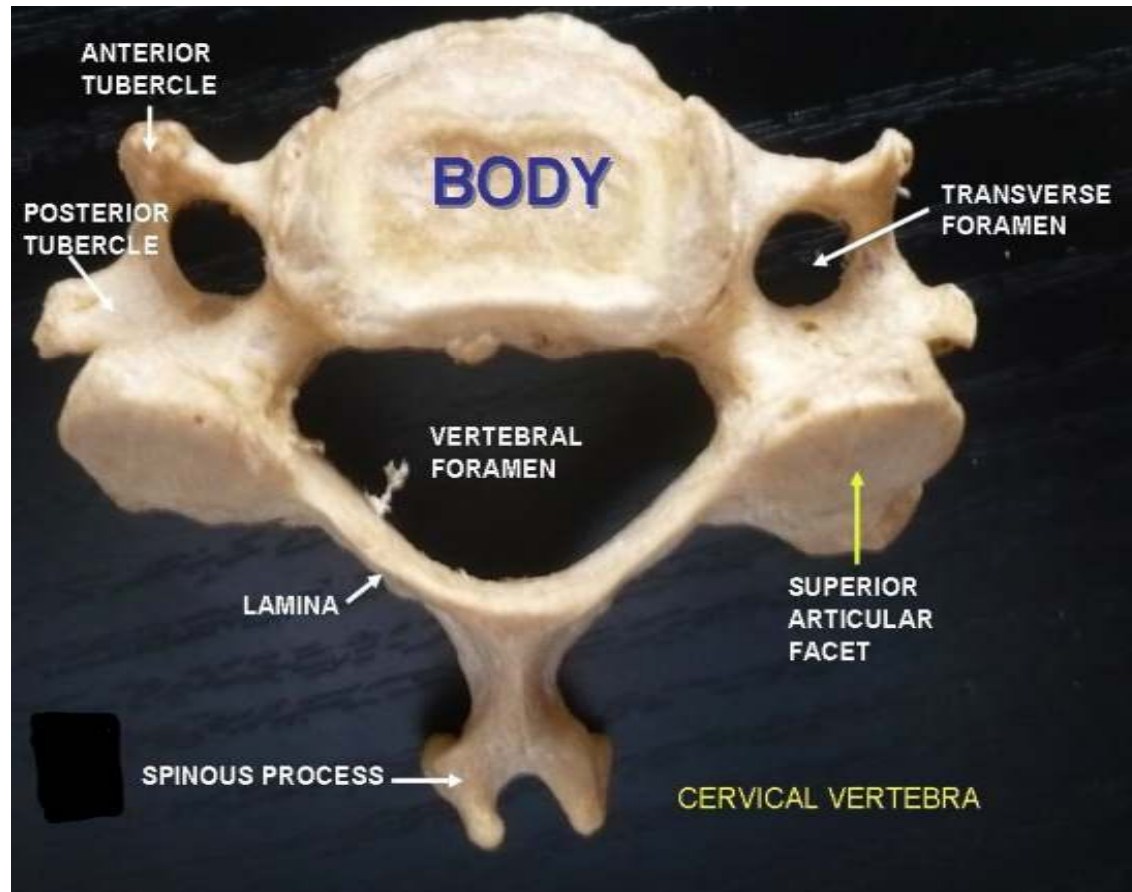


# AXIS(C2)

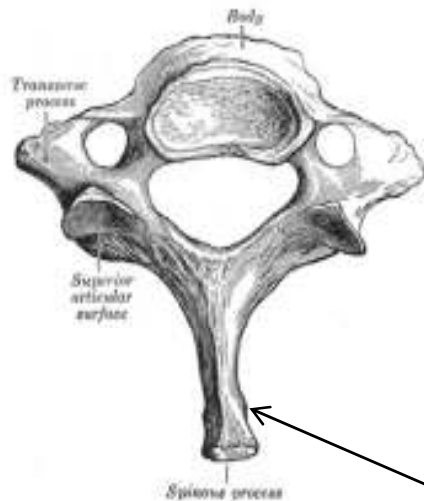




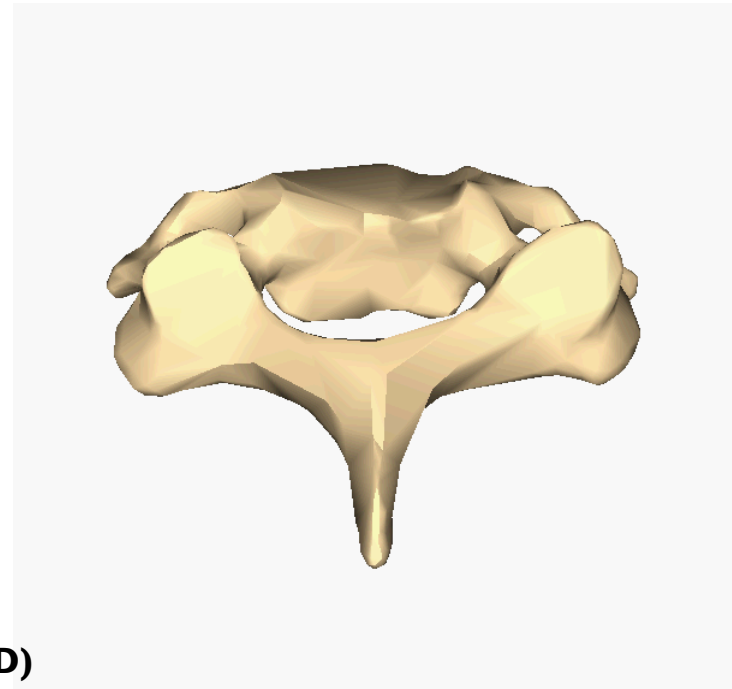
## C3 TO C6 VERTEBRA



## C7 VERTEBRA PROMINENS



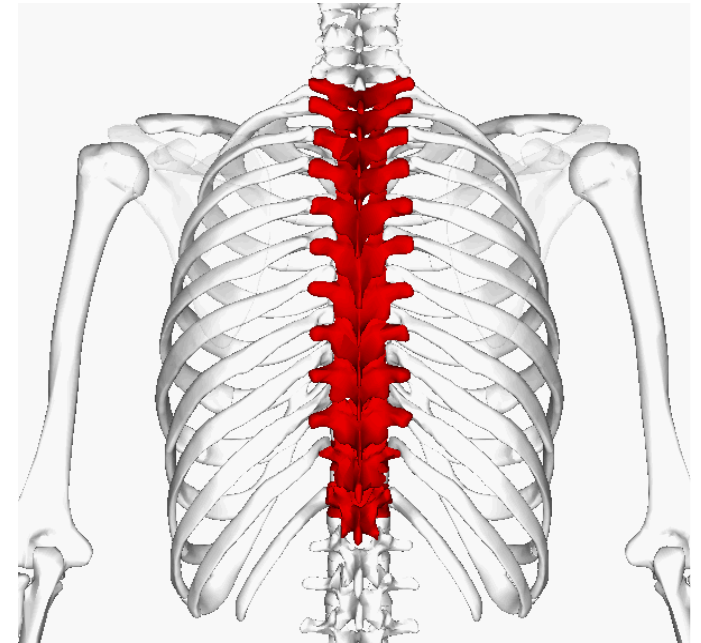
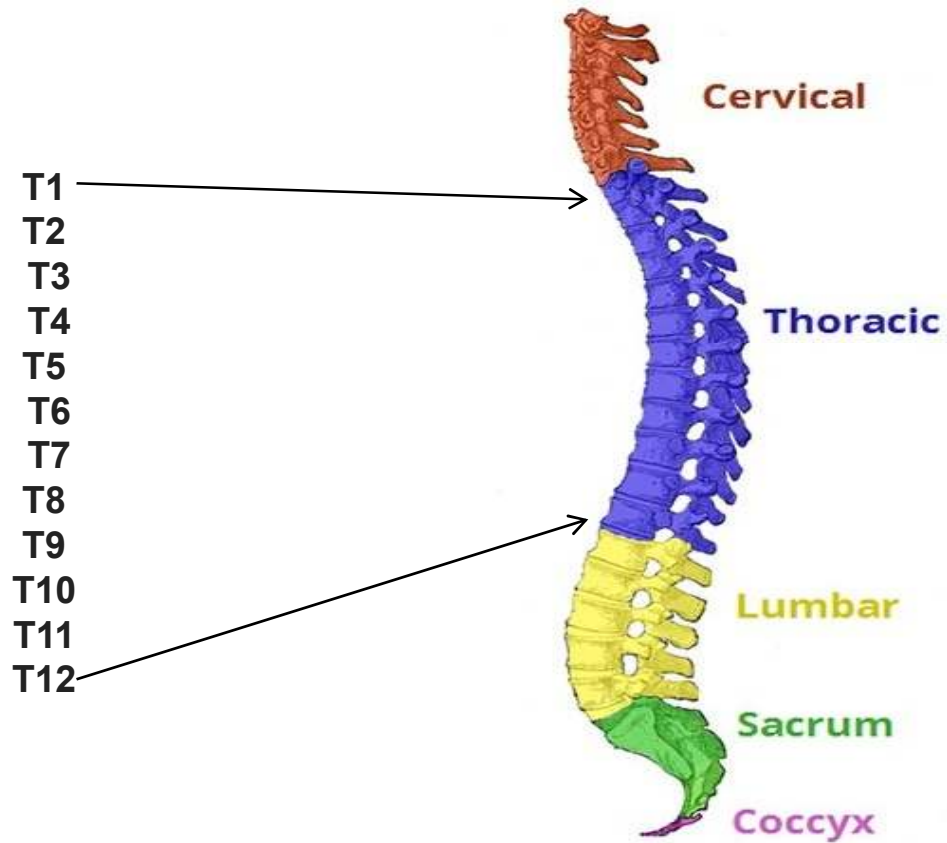
**SPINOUS PROCESS(NON BIFID)**



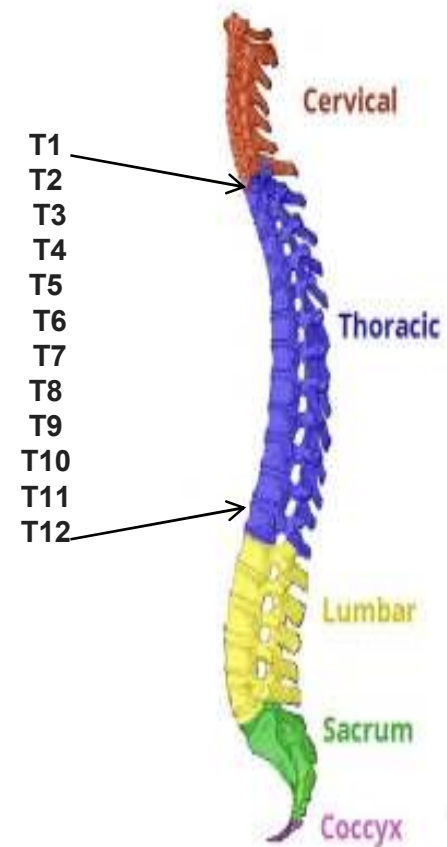
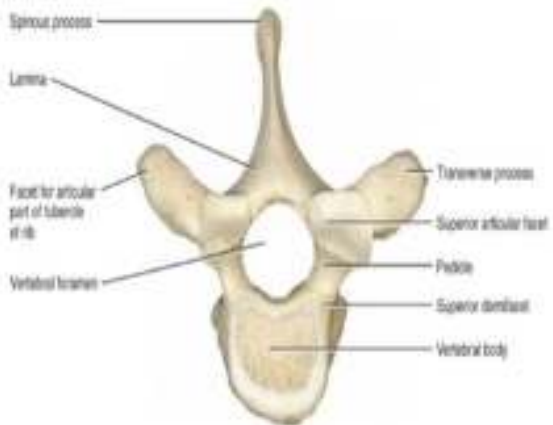
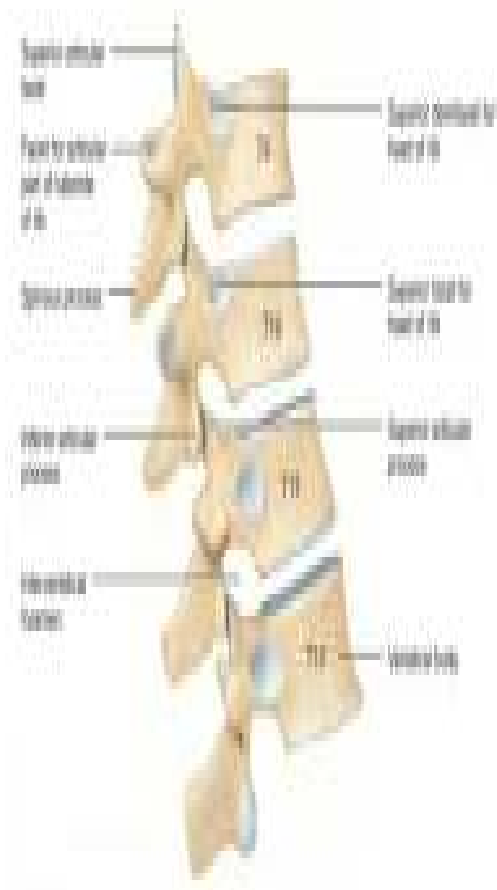
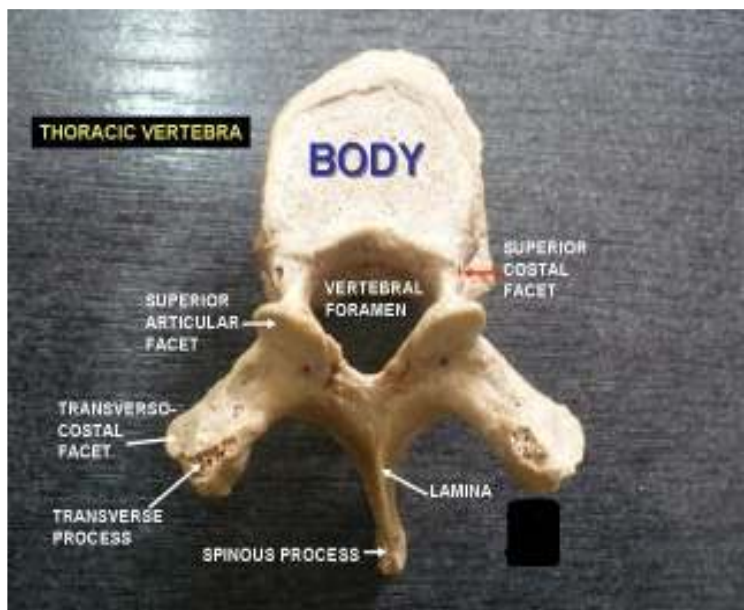
**ATYPICAL VERTEBRA : C1(ATLAS) , C2(Axis) , C7(PROMINENS)**  
**TYPICAL VERTEBRA : C3 TO C6**



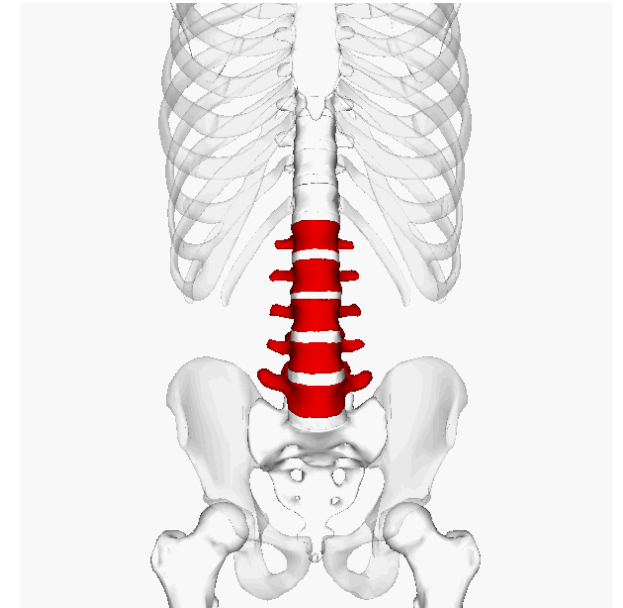
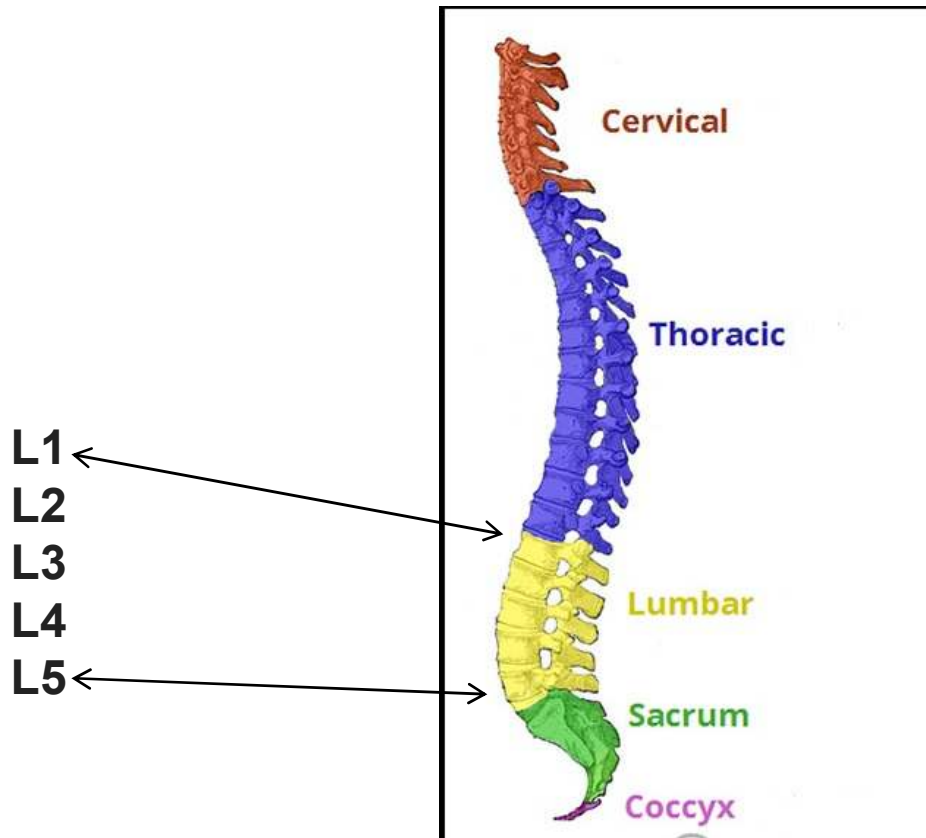
## Thoracic Vertebrae/বক্ষদেশীয় কশেরুকা (12)



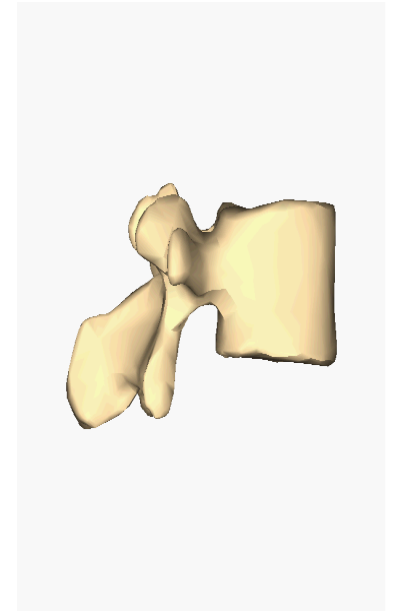
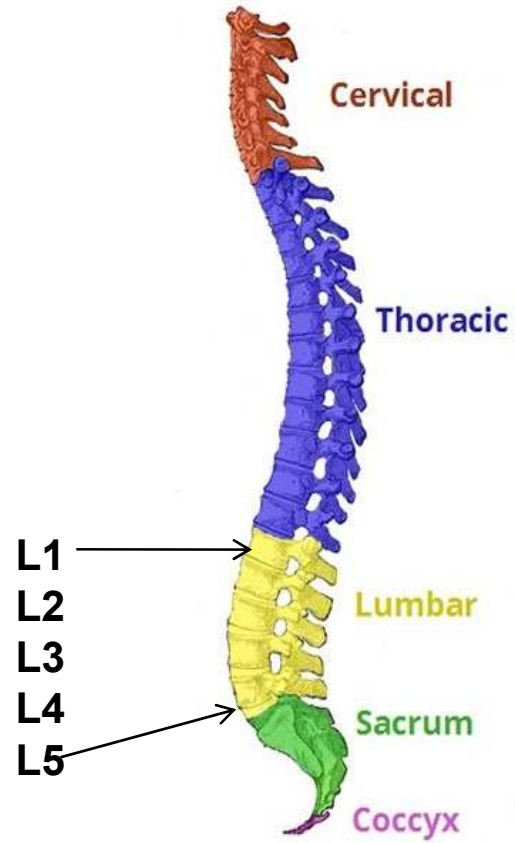
## Thoracic Vertebra



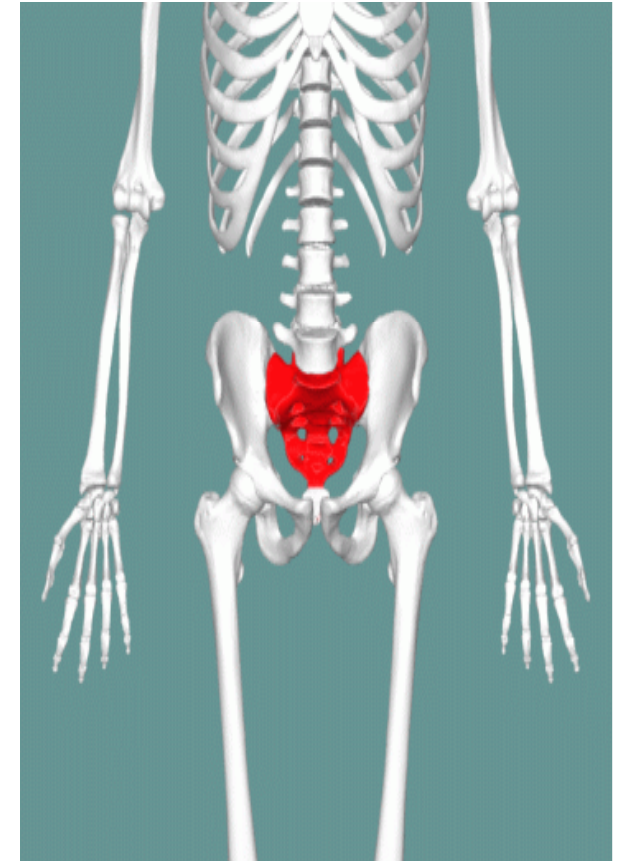
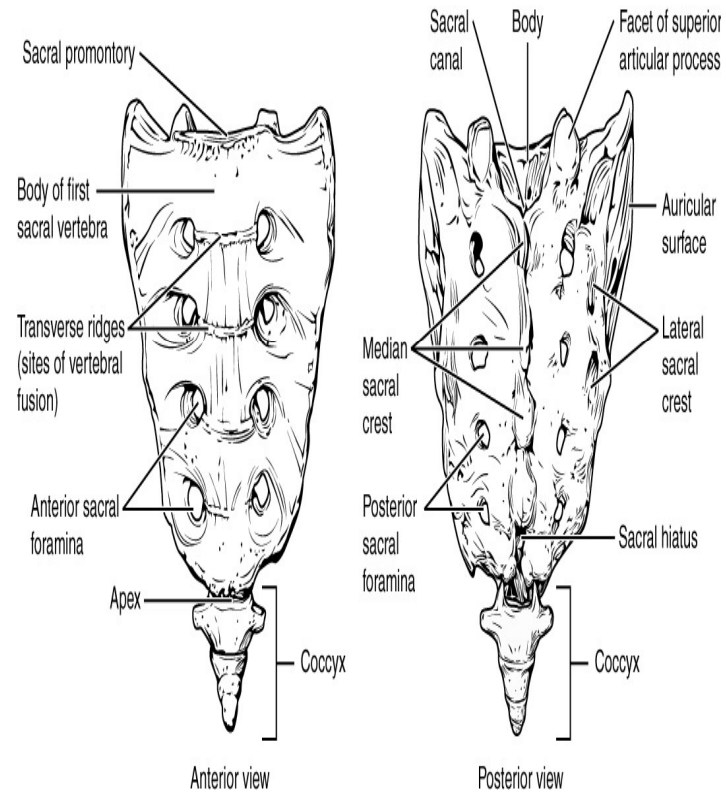
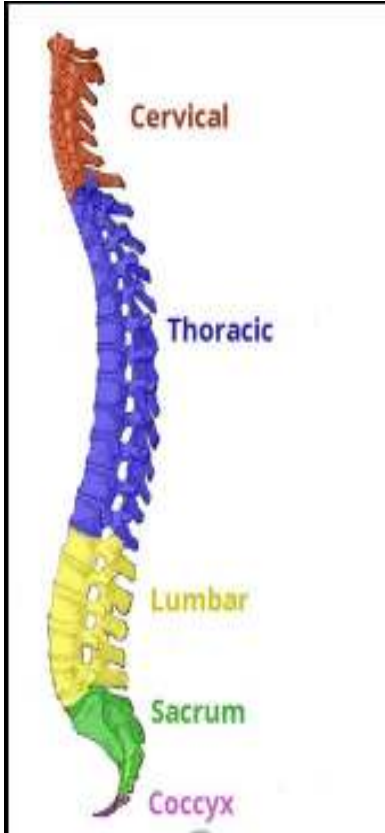
## Lumber Vertebrae/কটিদেশীয় কশেরুকা (5)



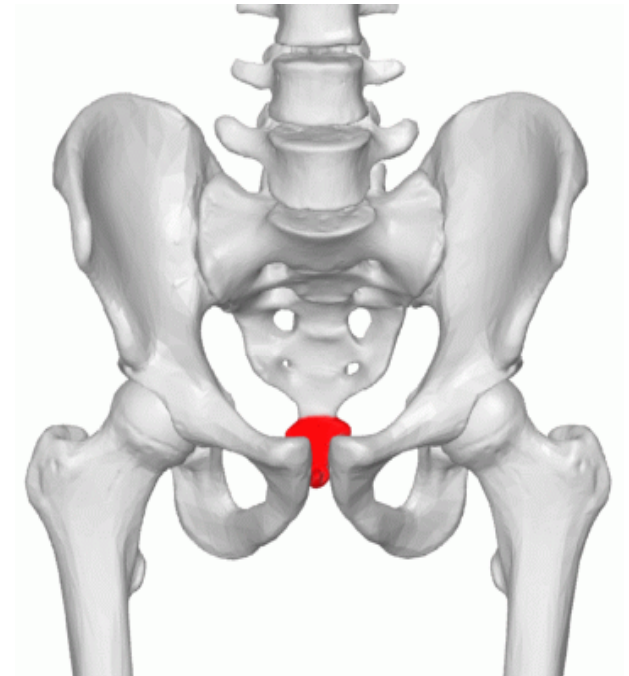
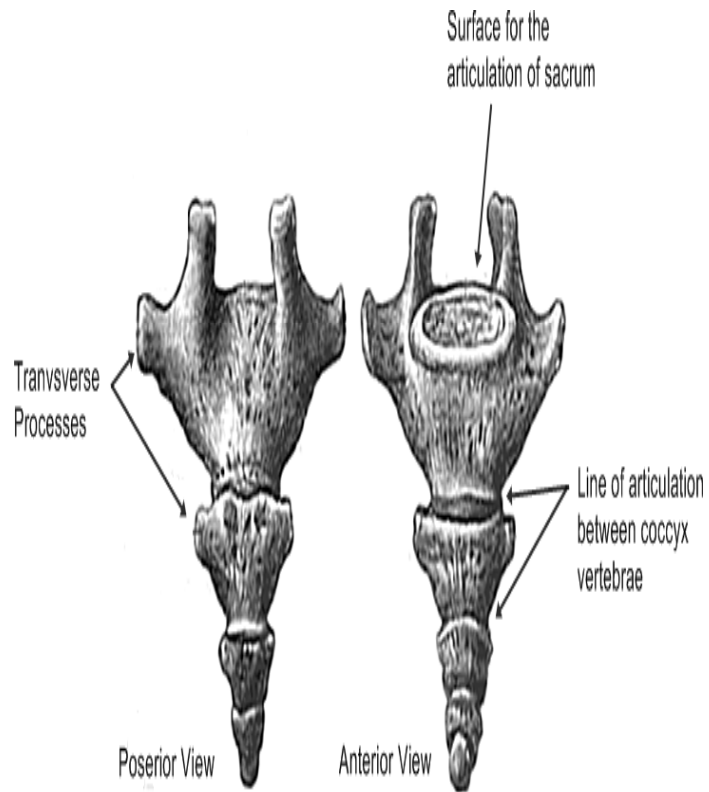
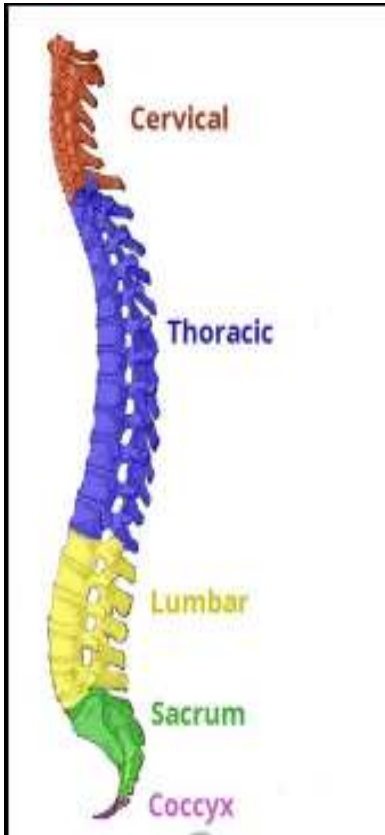
## Lumbar Vertebrae/কটিদেশীয় কশেরুকা (5)



## Sacrum Vertebrae/নিতম্বদেশীয় কশেরুকা (5)

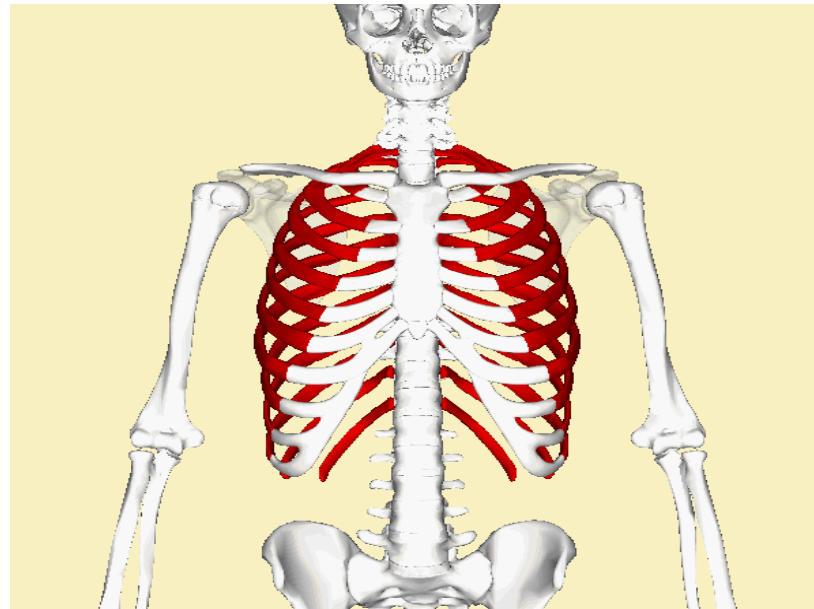
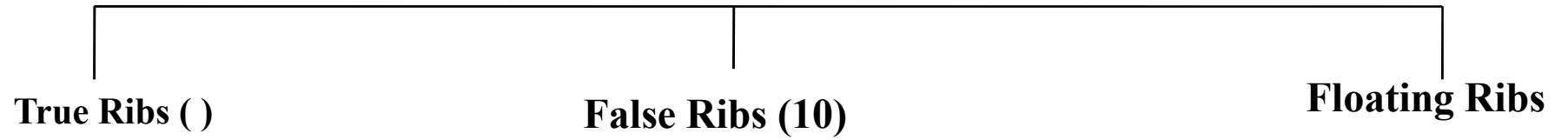


## Coccyx Vertebra/পুচ্ছদেশীয় কশেরুকা (4)

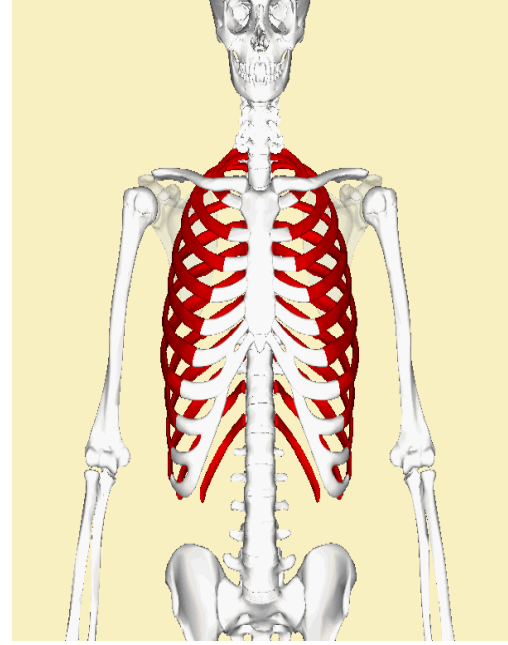
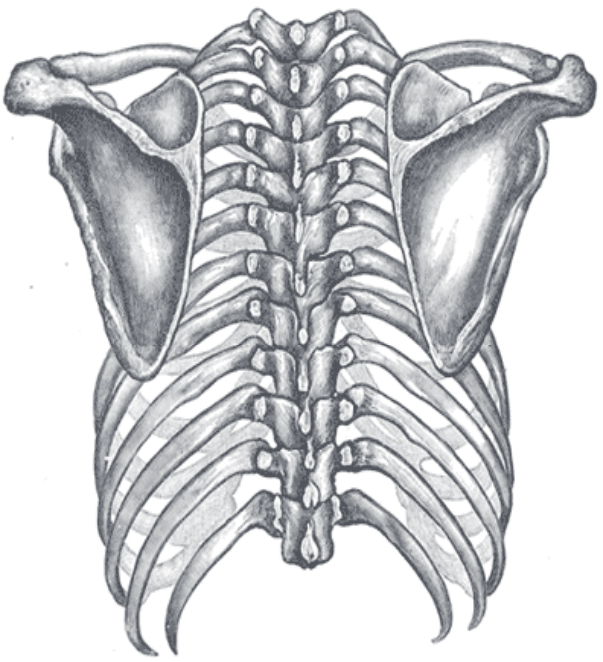
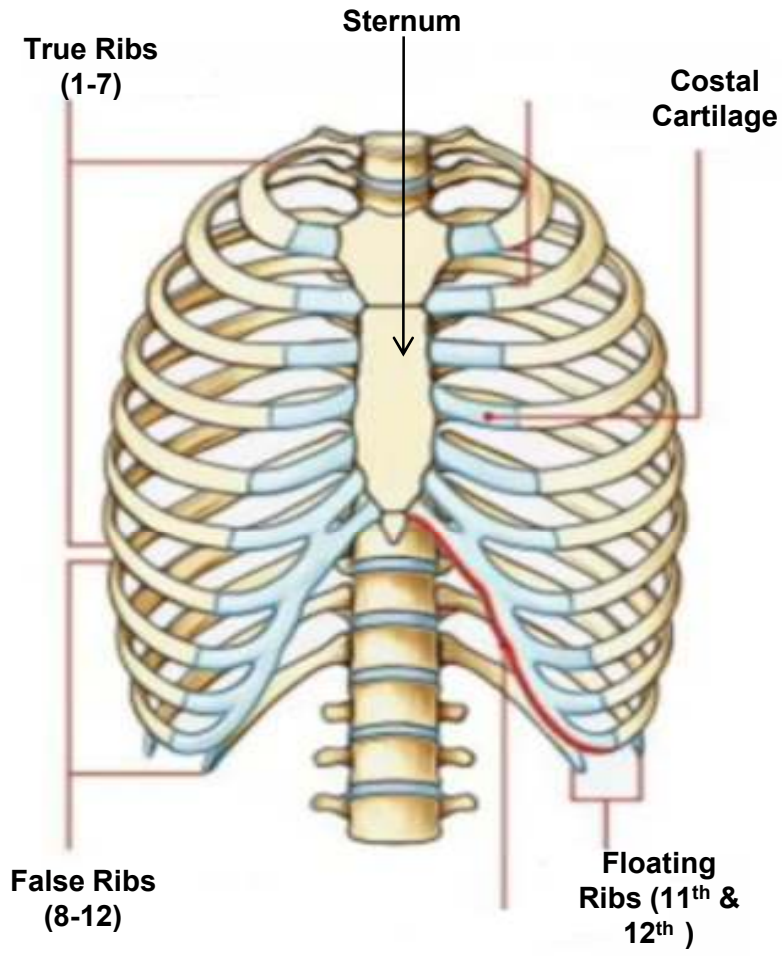




# Ribs



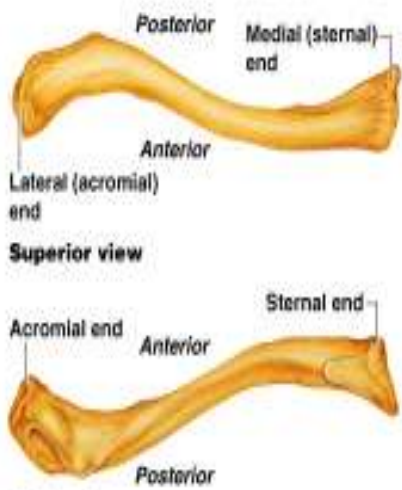
# Ribs



# Bones of the Shoulder Girdle



(a) Articulated shoulder (pectoral) girdle



(b) Right clavicle



(c) Right scapula, posterior aspect



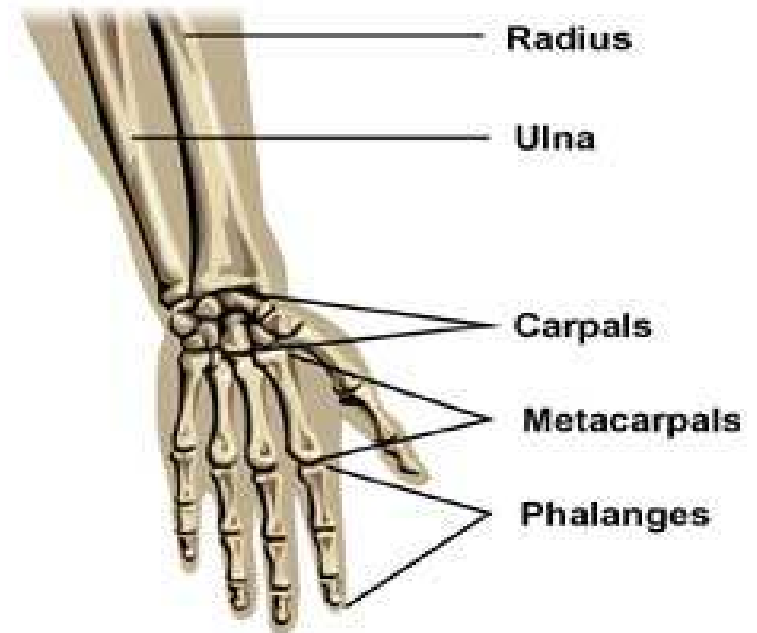
(d) Right scapula, anterior aspect



# Humerus (Upper Arm Bone)



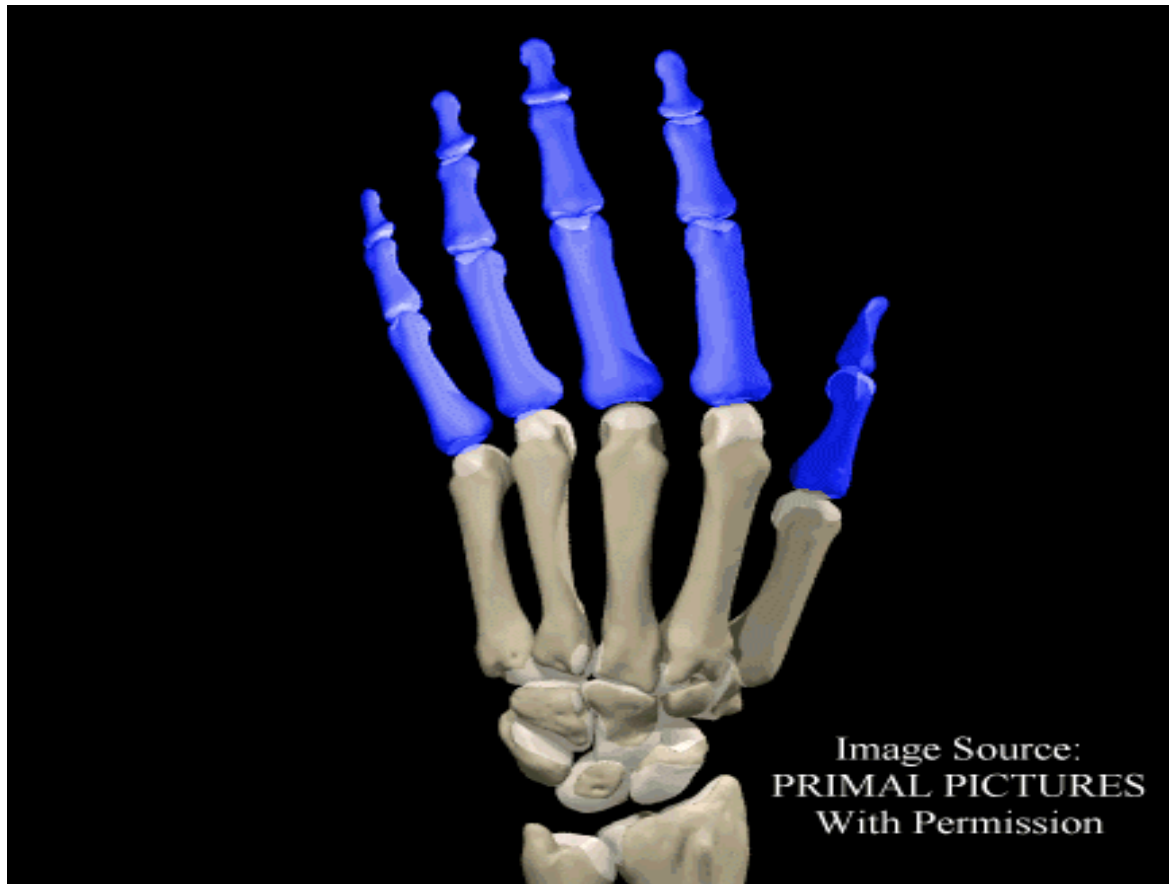
## Carpals or (Wrist Bones)



## Metacarpals (Top of Hands)

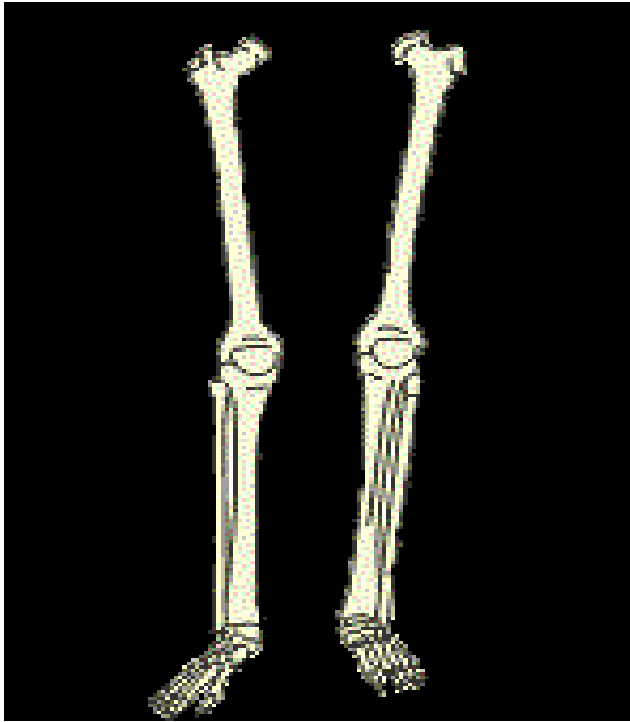


# Phalanges



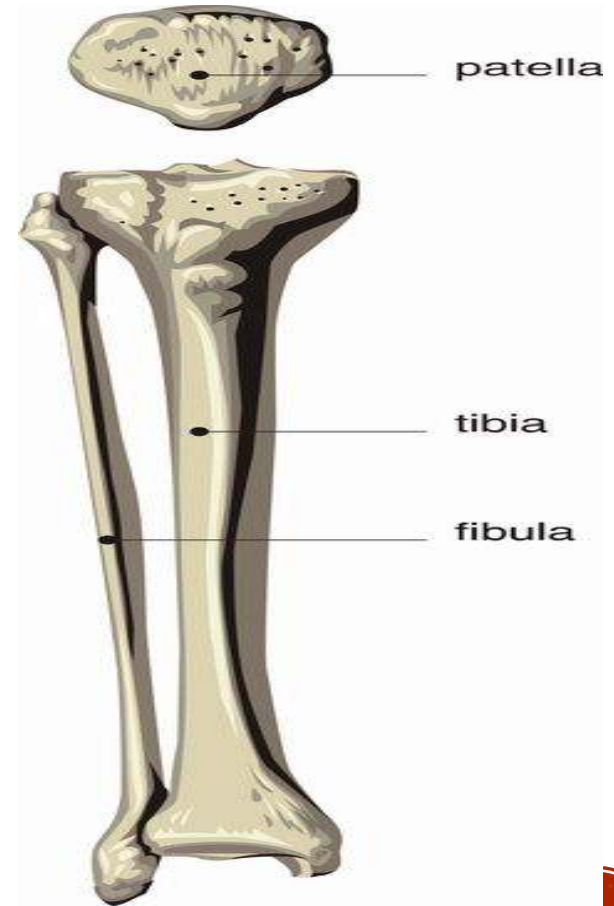
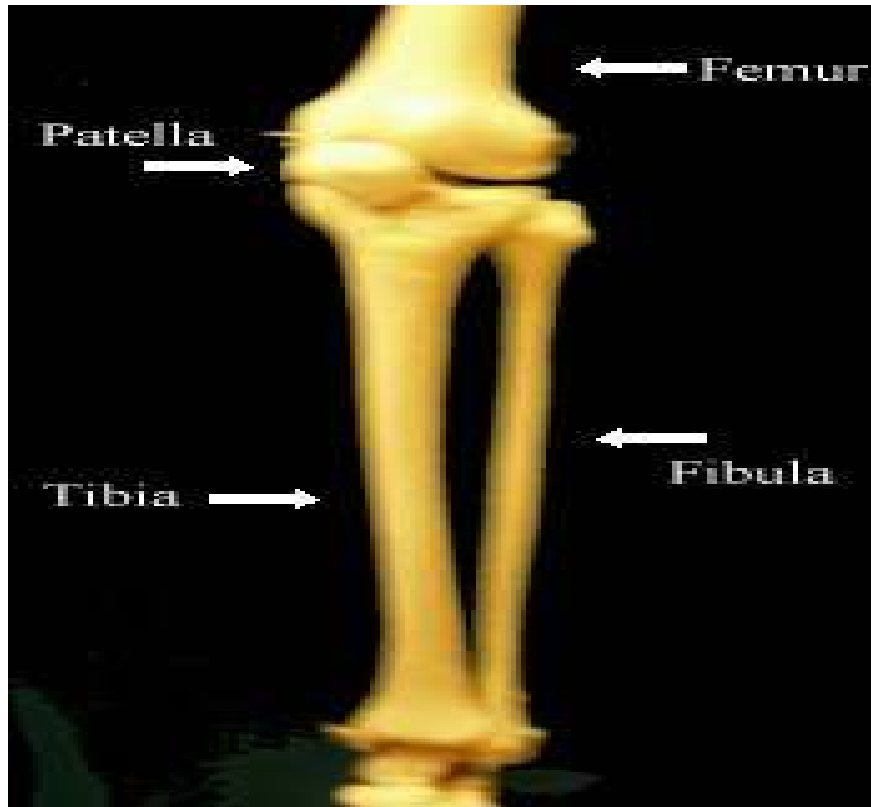
# Femur

(Largest Bone in the Body)

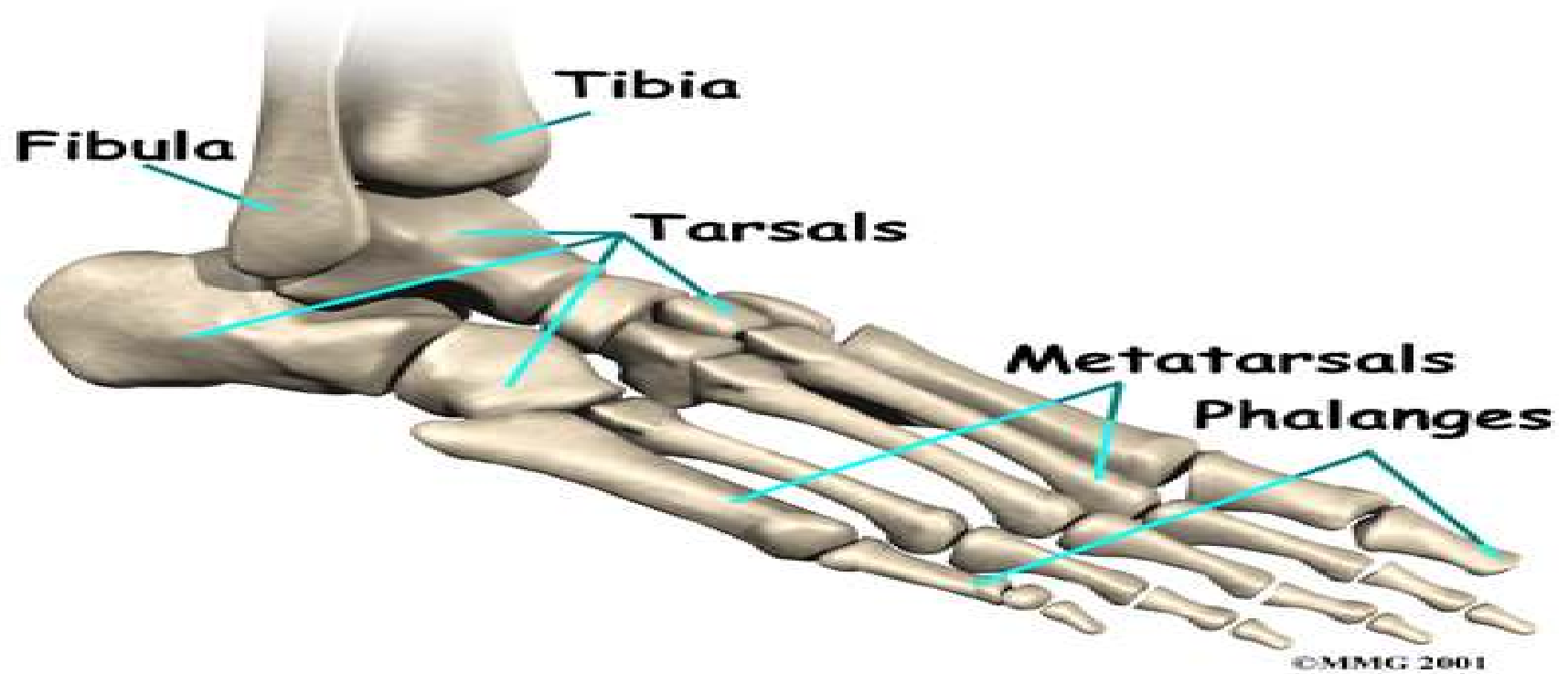




# Tibia and Fibula



# Tarsals, Metatarsals, Phalanges



# Calcaneus

